



## FAQ Peer Research and Social Action Network for potential Delivery Partners

### Contents of this document

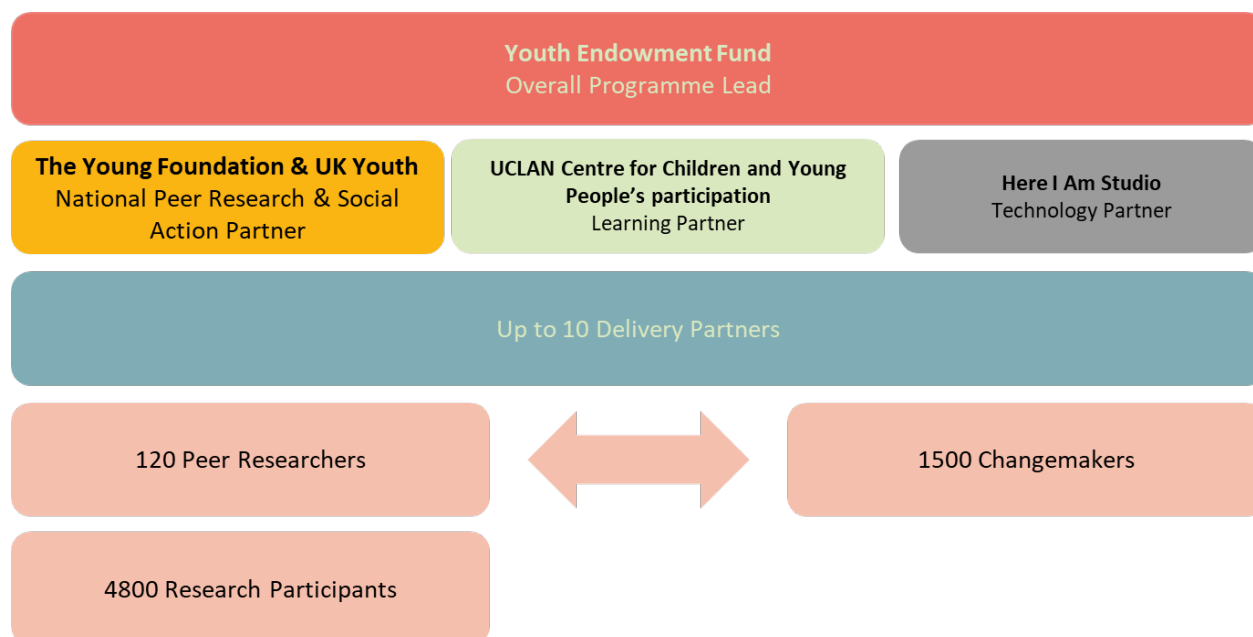
Programme information ..... 1

Delivery Partner application information ..... 7

Peer Research and Social Action information ..... 10

### Programme information

- What will each partner do within the network?**



### Youth Endowment Fund (YEF)

- The Youth Endowment fund will be the overall programme lead for the network, overseeing partners' performance, managing the set-up of the network and hosting quarterly collaboration meetings



between partners. They will host the National Youth Voice Conference to be held at the end of the programme.

#### **National Partner (Young Foundation and UK Youth):**

- The National Partner will support all delivery partners during training, research and social action phases. They will hold 'train the trainer' sessions with Delivery partners. They will analyse all data collected across the network. They will plan and deliver a National Youth Voice Conference.

#### **Learning Partner (University of Lancashire Centre for Children and Young People's participation):**

- The Learning Partner will ensure continuous learning and improvement across the network by leading activities such as collecting and analysing impact, monitoring and learning data. They will also assess the quality of peer research data.

#### **Technology Partner (Here I am Studio):**

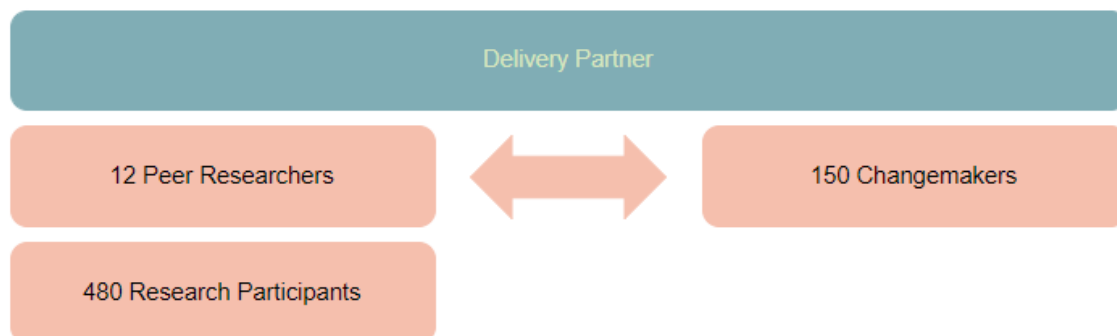
- The Technology Partner is responsible to develop, test and adapt a digital data collection tool to capture peer research data.

#### **Delivery partners:**

- The Delivery Partners will be responsible for programme delivery within their region, including recruitment of young people, retention, training and management of peer research and social action activity (including how the two connect and inter-relate at local level); safeguarding; ensuring regional engagement with the National Youth Voice Conference and engagement with quarterly network meeting.

- ***What are the recruitment targets for each Delivery Partner?***

In each region, Delivery Partners will recruit and engage:



- **12 Peer Researchers:** Each region will recruit a team of 12 paid Peer Researchers who will design and run research projects to better understand the causes, nature and potential ways to reduce the amount of young people becoming involved in violence. Peer Researchers will receive extensive training and support to lead local research projects. At least 10 researchers in each region will be aged 16–20. Where there are strong candidates aged 21–25, up to two can be appointed per region. Peer Researchers will be offered a [Real Living Wage](#) and their involvement in the project will amount to an average of 500 hours each.
- **480 Research Participants:** The Peer Researcher teams in each region will engage around 480 children and young people as participants in their research project (at least 50% of whom should be aged 10–14). Research participants will be engaged in various ways, from taking part in interviews to completing surveys.
- **150 Changemakers:** Each region will recruit a further ~150 children and young people (aged 10–20) who will get involved in various social action activities from short-term / one-off taster session activities to structured, longer-term social action projects. Half of the 150 Changemakers per region will be aged 10–14. Young people who have been research participants can also be recruited as Changemakers.

When outlining their recruitment plans, applicants should explain how they intend to retain and engage this number of young people throughout the programme.

A core aim of this programme is to tackle the persistent gap in youth social action by ensuring young people independent of their backgrounds,

including racial and ethnic backgrounds, are equitably involved in this programme. We expect all programme partners to outline how they will ensure equity, diversity and inclusion is practiced in their work strand, including ensuring a culture in which all young people feel valued and supported during their participation in the programme.

- ***What are the timelines for this programme?***

The programme, including the appointment of all partners, will be set-up by July 2021, with young people trained and subsequently involved in peer research and social action from August 2021 until December 2022. In December 2022, programme activity will be concluded at National Youth Voice Conference. YEF final reporting will be complete by February 2023.



- ***What might the programme look like on the ground?***

The network is based on the principle of co-creation and equitable involvement of young people. Therefore, Delivery Partners and the young people involved will be provided with a menu of support and training available to them and the young people they are working with. They will receive support from the YEF and the National Peer Research and Social Action Partner (the Young Foundation and UK Youth) to create regional training and support programmes, tailored to the interests, needs, and plans of young people.

Similarly, we are not prescribing a programme of research, instead we are providing broad themes which will feed into YEF's wider understanding of the lives of young people affected by violence. As peer research helps gather contextualised insights, the research questions we seek to answer

will relate to factors like young people’s home, community and social environment, which can affect their likelihood of offending. The YEF and the National Partner will collaborate with delivery partners and young people involved to define how the programme is delivered. The National Partner will support Delivery Partners to go through a process to tailor broad research themes to the local context, plan how to conduct fieldwork and transform findings into social action. An example of this process is outlined in the table below.

<b>Step 1: Research planning</b>	
Youth Endowment Fund selects a <b>broad research theme</b>	<i>“Understanding the relationships and support systems of young people at risk of being drawn into violence”</i>
Delivery partners embed <b>the research theme</b> into their <b>local context</b>	<i>“Understanding the relationships and support systems of young people from low-income families in Salford”</i>
Through interactive workshops led by the delivery partner, Peer Researchers define <b>research questions</b> which will translate into research projects	<ul style="list-style-type: none"> <li>• <i>How do young people in Salford interact with others during their daily lives? Where do they meet other people?</i></li> <li>• <i>Where do young people turn to for support?</i></li> </ul>
Young people and delivery partners decide on which <b>research methods</b> to be used	<i>Peer Researchers decide that they will conduct interviews and surveys with young people and incorporate several creative methods in their approach.</i>
<b>Step 2: Fieldwork and data analysis</b>	
Peer Researchers conduct their research with young people, <b>fieldwork</b> is	<i>Peer Researchers use a creative method, for example a mapping exercise and then go through other interview questions. Responses are recorded through the mobile</i>

supported by the delivery partners	<i>application and a photo is taken of the map at the end of the interview.</i>
Peer Researchers and delivery partners analyse the data collected to find common themes. <b>Data analysis</b> across the network is conducted by the national partner.	<p><i>Through interactive workshops, Peer Researchers identify four core themes that the data they collected reveals:</i></p> <ul style="list-style-type: none"> <li>• <i>There is a lack of activities for young people, especially accessible, affordable and engaging activities.</i></li> <li>• <i>Young people report schools as untrustworthy and some even say it is an unsafe space where they are at risk of bullying, racism and unfair treatment.</i></li> </ul>
<b>Step 3: Social action planning</b>	
Peer Researchers are supported by delivery partners to <b>develop feasible social action plans</b> for to tackle issues identified	<ul style="list-style-type: none"> <li>• <i>Peer Researchers plan to develop engaging and accessible, low-cost afternoon activities together with young people from the area.</i></li> <li>• <i>Peer Researchers want to collaborate with local schools and the local authority to jointly develop plans supporting young people to speak up against racism in school.</i></li> </ul>
<b>Step 4: Social action delivery</b>	
Peer Researchers <b>run social action activities</b> , engaging ~150 Changemakers to effect <b>positive changes to issues identified</b>	<ul style="list-style-type: none"> <li>• <i>Peer Researchers partner with a local youth centre (or other venue / partner as available) to run a series of workshops with social action participants ('Changemakers') to design more accessible and engaging activities which young people would actually use at the times they need them most.</i></li> <li>• <i>Peer Researchers develop ideas of how racism in schools could be</i></li> </ul>

	<p><i>tackled (e.g. anti-racism training for teachers, confidential support for pupils affected). They are supported by the delivery partners to present their ideas at a local council meeting and agree on an action plan with school representatives.</i></p>
--	--

- **How will the programme be delivered if there are further lockdowns?**

If face-to-face activities are not to go ahead for parts of the programme, we will use accessible online solutions to engage young people. The YEF will work with the delivery partners, technology partner, national partner and learning partner to establish the tools needed to carry out training, peer research and social action projects online.

## **Delivery Partner application information**

- **Who can apply to be a delivery partner?**

We can only consider proposals from registered not-for-profit organisations for this grant (for example, registered charities, voluntary and community organisations, CIOs, CIC, not for profit company limited by guarantee). As part of the due diligence process, successful applicants will have to demonstrate their not-for-profit status.

Statutory services, such as local authorities, can apply given any proposed activities are not statutory responsibilities, are open to young people beyond those already supported by the statutory service and all other funding requirements are met. Additionality of the proposed activities will be considered in the eligibility of organisations applying for grants.

- **What support will we get to deliver this programme?**



Delivery partners will be supported by the National Partner throughout the programme as their main point of contact, with support also offered by the YEF to meet key deliverables. They will be supported to recruit, train and deliver peer research and social action projects with the young people involved throughout the programme. There will be an initial comprehensive training between July and August 2021, and regular support offered hereafter through regular communications.

- ***Where in each region will the network operate?***

The network will operate across all nine regions of England, sometimes referred to as 'NUTS 1 regions' (South East, London, North West, East of England, West Midlands, South West, Yorkshire and the Humber, East Midlands and North East) and Wales. There will be one network per region.

We are not prescribing where in each region the programme should be run, but Delivery Partners are asked to outline the rationale behind their selection of a specific location or area and why young people's involvement in violence is an important local issue that needs to be investigated. We would also like the Delivery Partners to outline how localised their delivery will be and how this relates to local characteristics and needs (for example, by referencing [youth justice statistics](#), [The Co-op Community Wellbeing Index](#) or any other appropriate measures for your region).

- ***Could our organisation apply to be Delivery Partner to in more than one region?***

Yes, if the organisation can justify how the networks will be managed and can demonstrate strong understanding of young people with lived experience of violence or who are at risk of becoming involved in violence in each location. Only one application is needed for an organisation to apply to multiple regions.

- ***Can we apply with other organisations for a Delivery Partner role?***





Yes, The YEF is happy to consider proposals from consortiums, provided consideration is given to communication and how the teams will work well together. One organisation in the consortium will need to be the lead partner and primary contact for the YEF and have sufficient capacity to process a grant of this size. A plan of how the consortium will be managed should be included in the application. Multiple organisations can also apply to the delivery partner for more than one location, if they can justify strong local understanding and networks in each location.

- ***How do applicants outline their plans for ensuring diversity in peer research and social action networks?***

Applicants are asked to submit their understanding of the make-up of their target beneficiary group and how Peer Researchers, Changemakers and research participants will be recruited, engaged and retained throughout the programme so that target groups are reached. We would like to understand how reaching young people who are involved in violence or who are at risk of becoming involved in violence is at the core of the organisation's plans.

The YEF have minimum targets that we are looking to use as a benchmark for diversity across the network:

Young people from outside of urban areas	At least 15%
Young people from Black, Asian and Minority Ethnic groups	At least 20%
Young people with health conditions or impairments/ disabled young people (including learning disabilities)	At least 8%
Young people who are on the edge of care, in care or leaving care	At least 8%

We are looking to use these as an approximate target for the national network but recognise the make-up of different regions in England and Wales will mean there needs to be specific targets for each region. The



applicants should reflect on their proposed targets compared to the YEF minimum targets to show their localised approach.

- ***Is there any guidance on the budget available for Delivery Partners to run a peer research and social action network?***

An indicative budget for this work is up to £370,000. Note that these costs are per regional network, so if an applicant is budgeting for two regions this total would double.

Budgets should set out:

1. Salary costs including a detailed list of activities each team member is allocated to
2. Salary costs for the Peer Researchers
3. Non-staffing costs (e.g DBS checks, equipment such as mobile phones for young people).

We are open to applicants' proposals on what is a suitable budget for this piece of work, and we will be considering value for money as part of our assessment.

## **Peer Research and Social Action information**

- ***What is Peer Research?***

Peer research is a participatory research method in which people with lived experience of the issues being studied take part in directing and conducting the research. Peer research aims to empower people to become involved in positive change in their own communities by contributing to the research process, connecting with and hearing from a variety of people. Peer Researchers may be involved in assisting with



research design, developing research tools, collecting and analysing data or writing up and disseminating findings<sup>1</sup>.

In the case of this programme, Peer Researchers will be young people aged 16–20 with lived experience of youth violence. They will carry out research activities with other young people that have lived experience of violence.

- ***What is youth Social Action?***

Youth social action is all about young people carrying out activities that make a positive difference to a community, cause or social problem that matter to them.<sup>2</sup> This can be big or small, from volunteering, to speaking at events, to meeting with MPs. In the case of this programme, social action will seek to address issues related to young people's experiences and how violence has affected their lives.

All #iwill Fund partnership programmes are based on the six principles of youth social action, and enable more young people, particularly from less affluent communities, to take part in high quality social action that builds a habit for life. The six principles that youth social action opportunities should meet to be considered high quality are:

- Be youth-led
- Be challenging
- Have social impact
- Allow progression to other opportunities
- Be embedded in a young person's life
- Enable reflection about the value of the activity

---

<sup>1</sup> Lushey, C. (2017). 'Peer Research Methodology: Challenges and Solutions' [online]. SAGE Research Methods Cases. <https://dx-doi-org.ezproxy.is.ed.ac.uk/10.4135/9781473994614>.

<sup>2</sup> #iwill: <https://www.iwill.org.uk/about-us/youth-social-action>



- ***Why are we establishing a peer research and social action network?***

This network is supporting the YEF to fulfil its mission of preventing children and young people becoming involved in violence by working towards four goals. By gaining peer research insights, we are aiming to get a deeper understanding of young people's experiences of youth violence and the factors that could prevent it. Secondly, the network will connect young people with key stakeholders in their areas as well as nationally, resulting in stronger relationships between young people and decision makers. By finding practical solutions to issues identified, young people will influence change. Ultimately, through the skills learnt through the accredited peer research training and social action workshops, increased confidence and exposure to employers, the network will support young people to access new opportunities.